

Length // ► Feed direction

Width



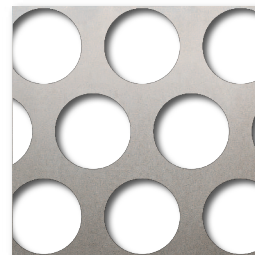
R10 T13

Figure drawn to scale 1:1

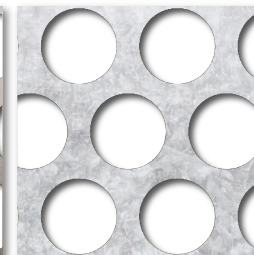
R10 T13



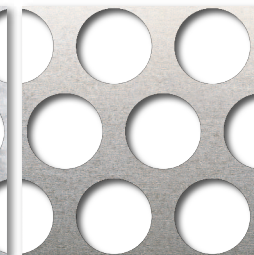
Available materials*



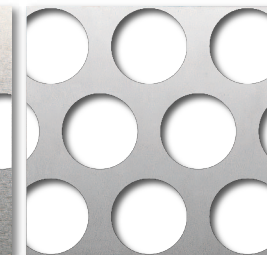
Steel



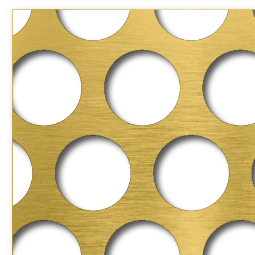
Sendzimir-galvanised



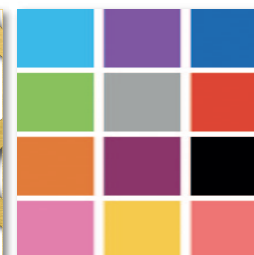
Aluminium



Stainless steel

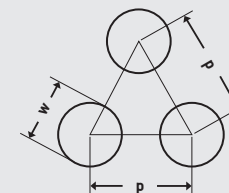


Brass



Powder-coated

Available in standard formats and **individual dimensions (w x l) of at least 125 x 300 mm to maximum 1,500 x 3,000 mm**, as well as in sheet thicknesses from **0.8 to 2.0 mm**.



Round holes 60 degree staggered pitch (RT)
w = 10 mm
p = 13 mm
Open area: 53.67 %

* Not all materials are available in all formats and sheet thicknesses.



SELECT AND ORDER
ONLINE

All variants of this product can be found online in our shop. Simply enter the product name in the online search.

