

Length // Expansion direction

Width



Rhomb 8x6x1

Figure drawn to scale 1:1

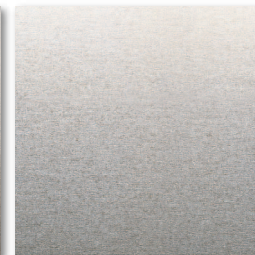
Rhomb 8x6x1



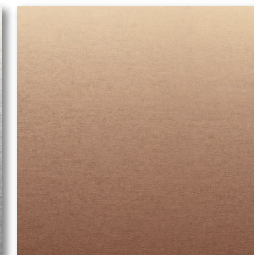
Available materials*



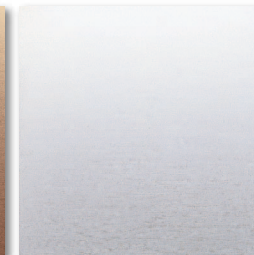
Steel



Sendzimir-galvanised



Copper

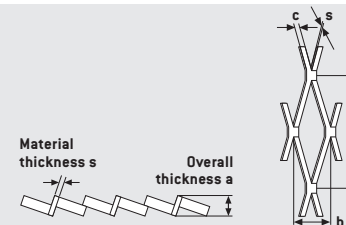


Titanium Zinc



Powder-coated

Available in standard formats and individual dimensions (w x l) of at least 300 x 300 mm to maximum 1,500 x 3,000 mm, as well as in material thicknesses from 0.7 to 1.0 mm.



Expanded metal
 $l = 8 \text{ mm}$
 $b = 6 \text{ mm}$
 $c = 1 \text{ mm}$
 Open area: 67 %
 Figure above in bridge thickness 1.0 mm

* Not all materials are available in all formats and sheet thicknesses.



SELECT AND ORDER ONLINE

All variants of this product can be found online in our shop. Simply enter the product name in the online search.

