

Length // ► Feed direction

Width



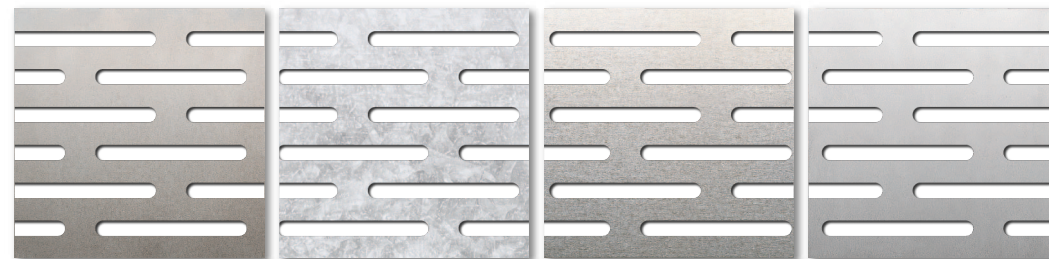
LR2x20 Z5x24

Figure drawn to scale 1:1

LR2x20 Z5x24



Available materials*

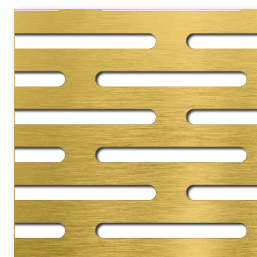


Steel

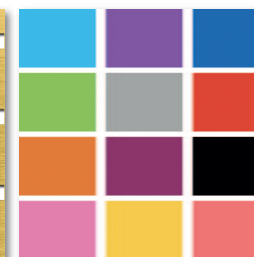
Sendzimir-galvanised

Aluminium

Stainless steel

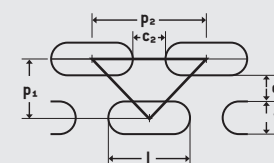


Brass



Powder-coated

Available in standard formats and individual dimensions ($w \times l$) of at least 125 x 300 mm to maximum 1,500 x 3,000 mm, as well as in sheet thicknesses from 1.0 to 2.0 mm.



Slotted holes
staggered pitch
 $w = 2 \text{ mm}$. $l = 20 \text{ mm}$
 $c_1 = 3 \text{ mm}$. $c_2 = 4 \text{ mm}$
 $p_1 = 5 \text{ mm}$. $p_2 = 24 \text{ mm}$
Open area: 32.62 %

* Not all materials are available in all formats and sheet thicknesses.



SELECT AND ORDER
ONLINE

All variants of this product can be found online in our shop. Simply enter the product name in the online search.

