

Length // ► Feed direction

Width



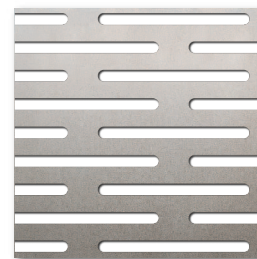
LR1.5x20 Z3.75x24

Figure drawn to scale 1:1

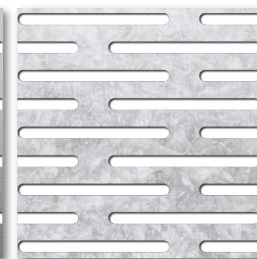
LR1.5x20 Z3.75x24



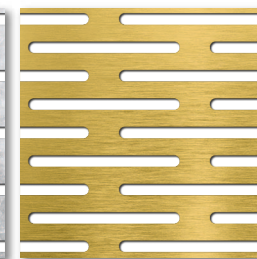
### Available materials\*



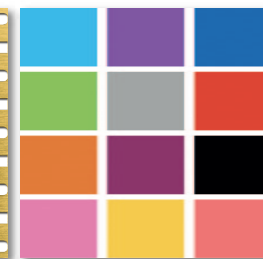
Steel



Sendzimir-galvanised

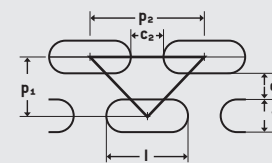


Brass



Powder-coated

Available in standard formats and **individual dimensions (w x l)** of at least **125 x 300 mm** to maximum **1,000 x 2,000 mm**, as well as in sheet thickness of **1.0 mm**.



Slotted holes  
staggered pitch  
 $w = 1.5 \text{ mm}$ .  $l = 20 \text{ mm}$   
 $c_1 = 2.25 \text{ mm}$ .  $c_2 = 4 \text{ mm}$   
 $p_1 = 3.75 \text{ mm}$ .  $p_2 = 24 \text{ mm}$   
Open area: 32.8 %

\* Not all materials are available in all formats and sheet thicknesses.



SELECT AND ORDER  
ONLINE

All variants of this product can be found online in our shop. Simply enter the product name in the online search.

